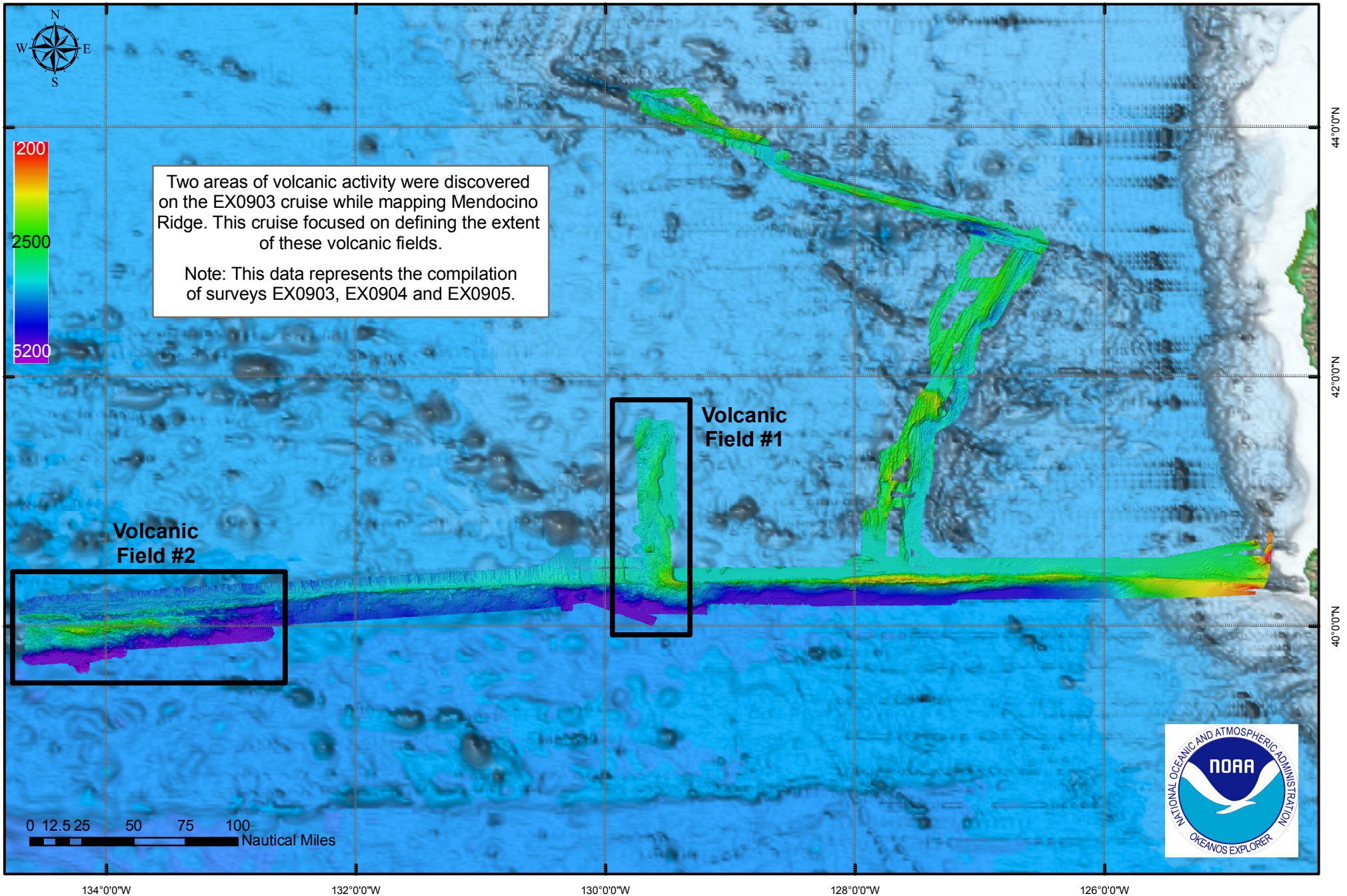


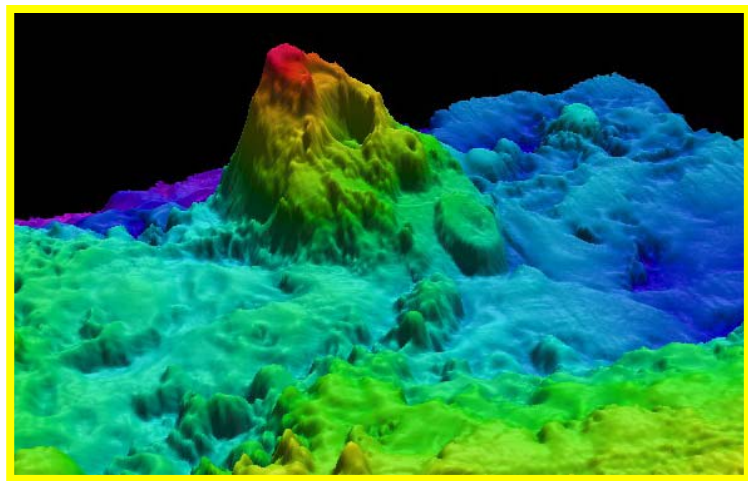
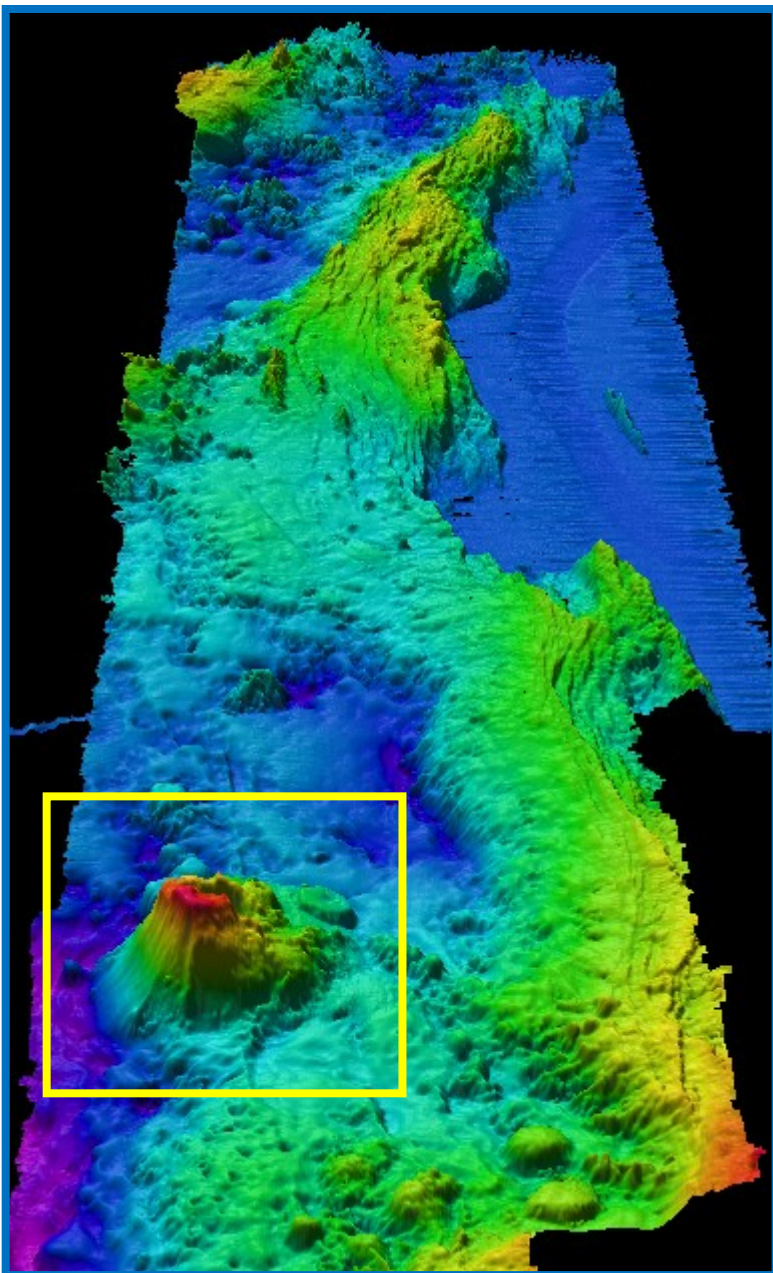
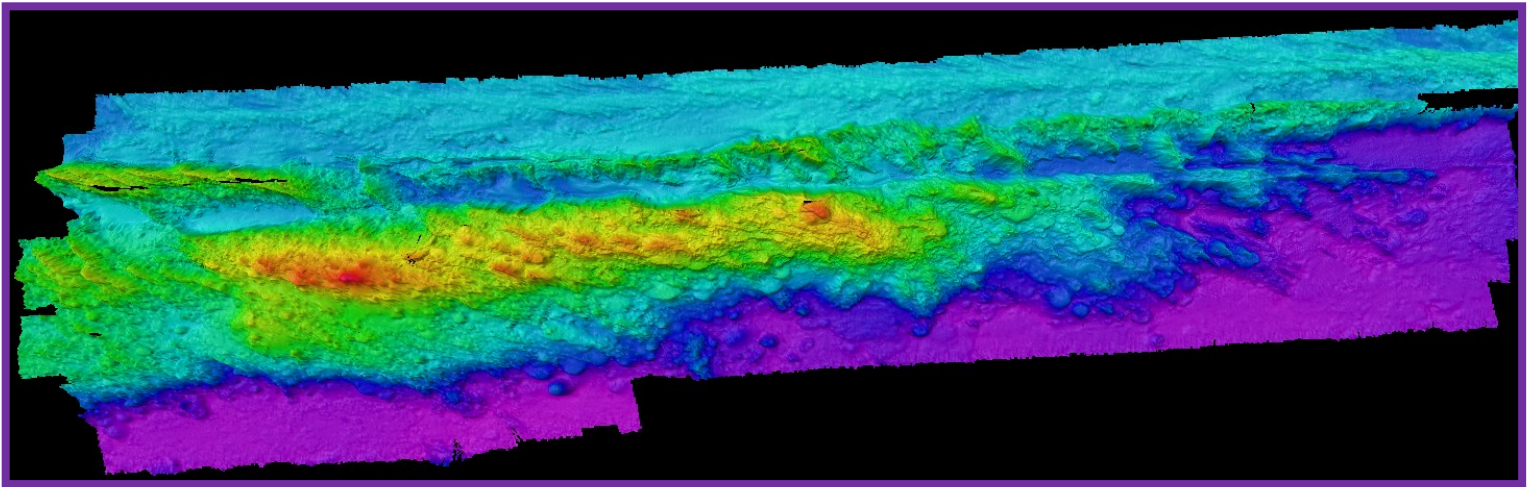
EX0905 Mapping Field Trials II: Exploring Extent of Volcanic Fields Mendocino Ridge June 17-27, 2009

Total miles mapped: 1,470.75 nm



EX0905 Mapping Field Trials II: Exploring Extent of Volcanic Fields

Mendocino Ridge June 17-27, 2009



Upper left: Plan view of Volcanic Field #2. This region includes data from EX0903 and EX0905. The northern and southern lines were completed on EX0905 to determine the extent of the volcanic field.

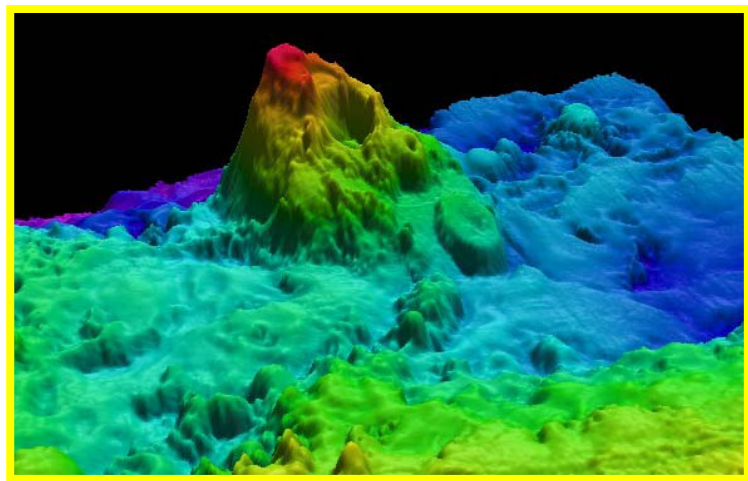
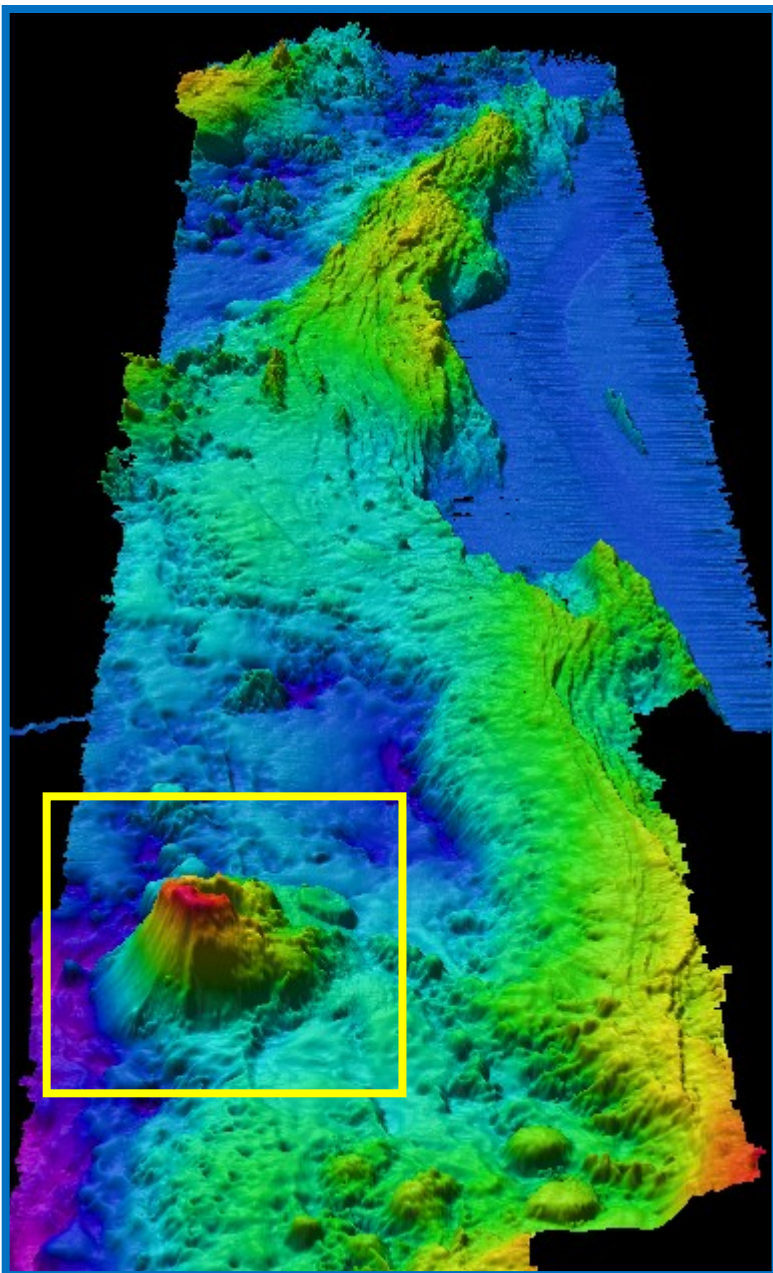
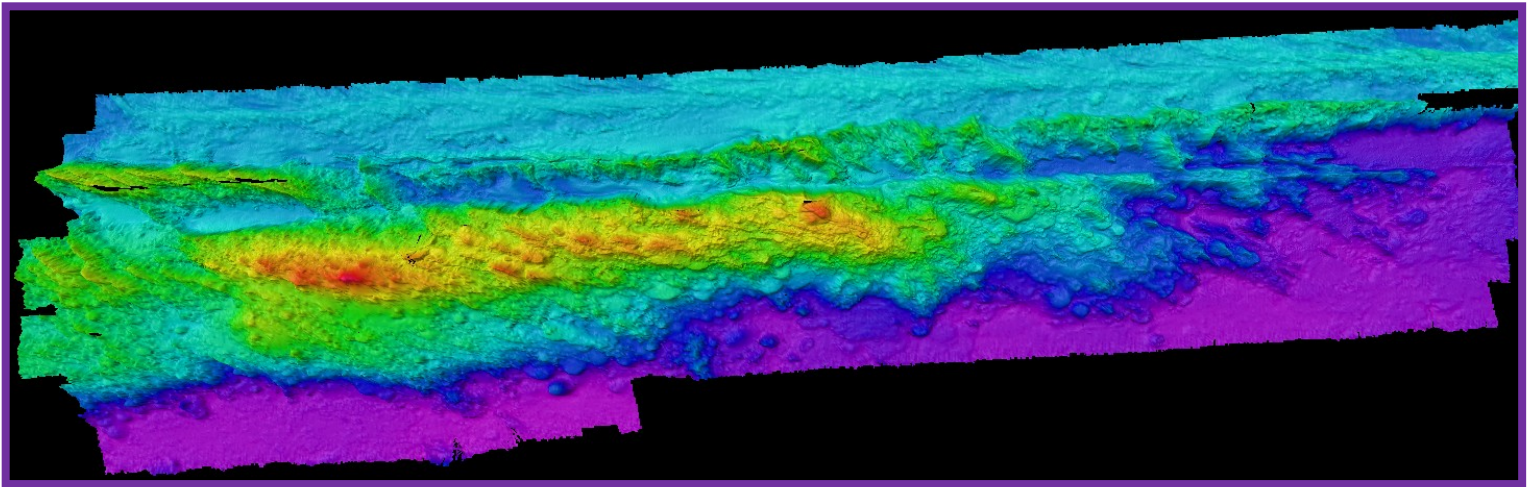
Left: A perspective view looking north at Volcanic Field #1. Note the seamont on the southwest corner and the channel in the northeast.

Above: A perspective view looking southeast at a newly discovered seamont with a distinct caldera.



EX0905 Mapping Field Trials II: Exploring Extent of Volcanic Fields

Mendocino Ridge June 17-27, 2009



Upper left: Plan view of Volcanic Field #2. This region includes data from EX0903 and EX0905. The northern and southern lines were completed on EX0905 to determine the extent of the volcanic field.

Left: A perspective view looking north at Volcanic Field #1. Note the seamont on the southwest corner and the channel in the northeast.

Above: A perspective view looking southeast at a newly discovered seamont with a distinct caldera.

