

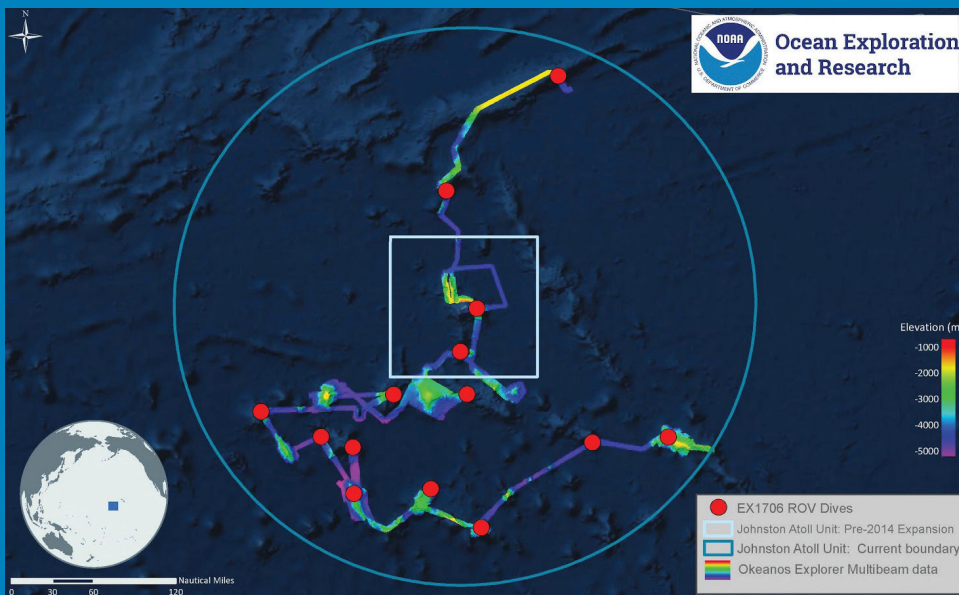
2017 Laulima O Ka Moana: Exploring Deep Monument Waters Around Johnston Atoll

NOAA Ship *Okeanos Explorer*, July 7 – August 2, 2017

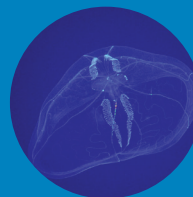
<http://oceanexplorer.noaa.gov/okeanos/explorations/ex1706/welcome.html>



This expedition is part of the three-year Campaign to Address Pacific monument Science, Technology, and Ocean NEeds (CAPSTONE), an initiative to collect deepwater baseline information to support science and management decisions in and around U.S. marine protected areas in the central and western Pacific.



Expedition Overview Map



Four ROV dives included focused water column transects to obtain information on animals living in the largest unexplored biome on the planet.



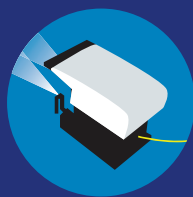
Documented precious corals in the Johnston Atoll Unit for the first time. Discovered eight high density deep-sea coral and sponge communities, which varied in diversity and species composition.



Conducted four live telepresence interactions with various groups around the U.S. including the Smithsonian National Museum of Natural History, Exploratorium, NOAA Science camps in Honolulu, HI and Seattle, WA, to engage and share the expedition with about 452 teachers, students and the general public.



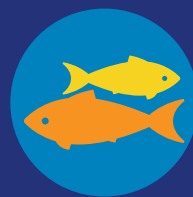
38,300+ square kilometers of seafloor mapped



15 remotely operated vehicle dives at a depth range of 250 to ~2,600 meters



73 biological & 24 geological samples collected



44 undescribed species observed



44 participating scientists, students, & managers



~1.1 million live video views